

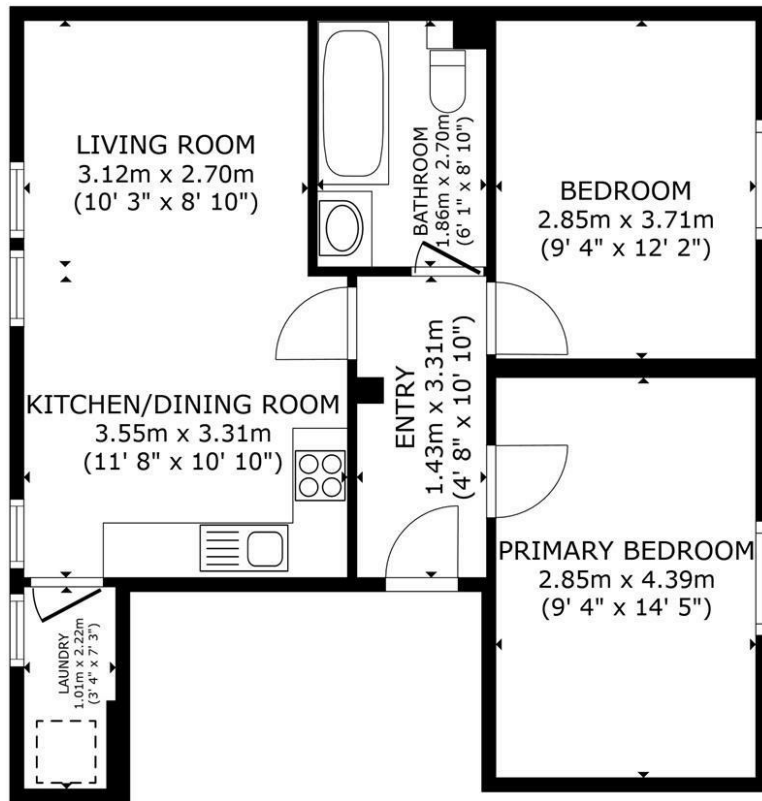


FLAT 3 REDLANDS PLACE BRIGHTON ROAD

£240,000
LEASEHOLD

- MODERN TWO BEDROOM FIRST FLOOR FLAT IN HIGHLY SOUGHT AFTER LOCATION
 - UTILITY ROOM
 - TWO SPACIOUS DOUBLE BEDROOMS
 - PART OF AN EXCLUSIVE DEVELOPMENT OF 5 APARTMENTS
- MODERN KITCHEN WITH INTEGRATED APPLIANCES
 - ATTRACTIVE BATHROOM WITH SHOWER OVER BATH AND HEATED TOWEL RAIL
 - WALKING DISTANCE TO LOCAL AMENITIES AND HORSHAM TRAIN STATION

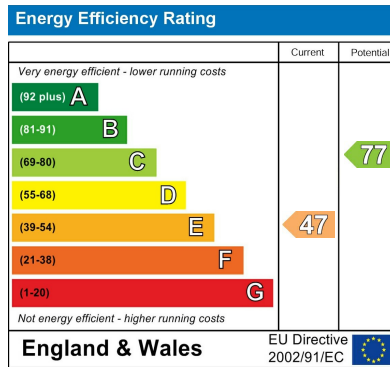




FLOOR PLAN

ELTONS
Estate Agents

GROSS INTERNAL AREA
FLOOR PLAN 57.7 m² (621 sq.ft.)
TOTAL : 57.7 m² (621 sq.ft.)
SIZES AND DIMENSIONS ARE APPROXIMATE, ACTUAL MAY VARY.



Agents Note: Whilst every care has been taken to prepare these particulars, they are for guidance purposes only. All measurements are approximate and are for general guidance purposes only and whilst every care has been taken to ensure their accuracy, they should not be relied upon and potential buyers/tenants are advised to recheck the measurements

Eltons Estate Agents Horsham 01403 299 771
13 - 15 Queen Street sales@eltons.co.uk
Horsham eltons.co.uk
West Sussex
RH13 5AA

ELTONS
Estate Agents